

**UHV**

**UNIVERSITY OF HOUSTON - VICTORIA**

# **FACT BOOK**

**2009**

Office of Institutional Research



# TABLE OF CONTENTS

	<b>Page</b>
<b>I. University of Houston-Victoria General Information</b>	
Mission Statement .....	1
University Profile .....	2
University of Houston System Board of Regents .....	3
UHV President’s Advisory Council .....	4
UHV President’s Cabinet .....	5
Faculty Council & Faculty Senate Executive Committee .....	6
Staff Council .....	6
Student Senate .....	7
Organizational Chart .....	8
Degree Programs & Delivery Site .....	9
<b>II. Student Information</b>	
<b>Enrollment</b>	
Enrollment 2000-2009 .....	11
Admissions 2005-2009.....	12
Admissions by Level by School Fall 2009.....	12
Detailed Composition of Student Body 2005-2009 .....	13
Annual Enrollment by Level 2005-2009 .....	14
Unduplicated Annual Enrollment.....	14
Enrollment by Major 2005-2009.....	15
Enrollment by County 2005-2009.....	18
Enrollment by Age 2005-2009.....	18
One-year Retention Rate by Ethnicity 2005-2009.....	19
<b>Credit Hour Information</b>	
Semester Credit Hours 2000-2009 .....	21
Semester Credit Hours by School by Level 2005-2009 .....	21
Semester Credit Hours by Instruction Areas 2005-2009 .....	22
Student/Faculty Ratio 2005-2009.....	24
Class & SCH Load 2005-2009.....	24
Annual SCH by Level 2005-2009 .....	25
Annual SCH Completion Rate 2005-2009 .....	25
Distance Learning 2005-2009 .....	26
<b>Degree Information</b>	
Annual Degrees Conferred by Level 2000-2009.....	27
Degrees Conferred by School 2005-2009 .....	27
Degree Conferred by Level by Ethnicity 2005-2009 .....	28
Teacher Education Certification Rate 2005-2009 .....	28
Degree Conferred by Level by Major 2005-2009 .....	29
Four-year Graduation Rate by Ethnicity 2005-2009 .....	32

## TABLE OF CONTENTS

	<b>Page</b>
<b>III. Faculty and Staff</b>	
UHV Faculty 2005-2009 .....	33
Detailed Composition of Full-time Faculty 2005-2009.....	34
Detailed Composition of Part-time Faculty 2005-2009.....	36
Full-time Staff Profile 2008.....	37
Full-time Staff by Classification 2005-2009 .....	38
Full-time Staff by Ethnicity 2005-2009.....	38
<b>IV. Financial Information</b>	
Revenues by Source FY2005-08 .....	39
Expenditures by Category FY2005-08 .....	40
Tuition and Fees 2005-2009.....	41
Financial Aid 2005-2009.....	41

**UNIVERSITY OF HOUSTON - VICTORIA  
MISSION STATEMENT**

The University of Houston-Victoria shares with all institutions of higher education the universal mission of teaching, research, and service. It shares with the other institutions of the University of Houston System a special responsibility to serve educational needs, to promote economic well being, and to advance the quality of life in the region.

The university's most distinctive commitment is to make higher education accessible to able students who might otherwise lack the opportunity. Its most compelling commitment is to make the quality of education they receive nonetheless competitive. The university emphasizes student learning, related research, responsiveness to student needs, and collaboration in the development and delivery of academic programs. Outreach has characterized its mission and history.

The university is an upper-level and graduate institution with selected bachelor's and master's degree programs in the Arts and Sciences, Business Administration, and Education and Human Development. In cooperation with community colleges, which offer the first two years of instruction, the university provides an opportunity for students to complete baccalaureate degrees. At both the undergraduate and graduate levels, the university admits only students whose records demonstrate successful academic performance at the college level.

The university serves students on campus in Victoria and delivers instruction to other communities in the area. In collaboration with other UH System universities, it offers degree programs at teaching centers in greater Houston. It provides extensive course offerings, selected degree programs, learning support, and many student services entirely online. In addition to degree programs, the university extends educational, informational, and cultural opportunities to the public through library services, outreach and professional development programs, and a variety of special events.

In reaching out to students online and on site in multiple communities, the University of Houston-Victoria is evolving beyond location. But though its identity may have changed, its basic mission remains the same: to provide able students, often with job and family obligations, convenient access to higher education that is affordable, credible, and relevant to their lives, their communities, and their world.

GENERAL INFORMATION

---

**UHV PROFILE**

**2009**

<b>Established</b>	1973
<b>President</b>	Tim Hudson
<b>Enrollment</b>	3,655 (FTE 2606.8)
<b>Faculty</b>	176 (FTE 120.5)
<b>Staff</b>	
<b>Alumni</b>	11,253
<b>Schools</b>	School of Arts & Sciences School of Business Administration School of Education & Human Development School of Nursing
<b>Degree Programs</b>	38 – Bachelor’s and Master’s
<b>Teaching Sites</b>	Victoria , Sugar Land, Cinco Ranch
<b>Degrees Awarded</b>	2007-2008: 801
<b>Budget</b>	\$ 42.7 million
<b>Annual Tuition &amp; Fees</b>	\$ 4,380**
<b>Accreditation</b>	Southern Association of Colleges & Schools <a href="http://www.sacscoc.org/index.asp">http://www.sacscoc.org/index.asp</a> Last Reaffirmation Review: 2003 Next Reaffirmation Review: 2014
<b>Carnegie Classification</b>	
Basic Type	Master's Colleges and Universities (larger programs)
Size and Setting	Small four-year, primarily nonresidential
Enrollment Profile	Majority undergraduate
Undergraduate Profile	Higher part-time four-year
Undergraduate Instructional Program	Arts & sciences plus professions, some graduate coexistence
Graduate Instructional Program	Post baccalaureate professional (business dominant)

\* FTE student: 12 sch per undergraduate, 9 per graduate

\*\* Based on two semesters for a full-time (12 SCH per semester), in-state undergraduate student.

**UNIVERSITY OF HOUSTON SYSTEM  
BOARD OF REGENTS  
FY 2010**

Officers

- Welcome W. Wilson, Sr., Chairman, Board of Regents
- Jim P. Wise, Vice Chairman, Board of Regents
- Nelda Luce Blair, Secretary, Board of Regents

Member(s) with terms set to expire August 31, 2011

- Carroll Robertson Ray
- Welcome W. Wilson, Sr.
- Jim P. Wise

Member(s) with terms set to expire August 31, 2013

- Mica Mosbacher
- Nelda Luce Blair
- Jacob M. Monty

Member(s) with terms set to expire August 31, 2015

- Nandita V. Berry
- Tilman J. Fertitta
- Jarvis V. Hollingsworth

Member(s) with terms set to expire May 31, 2010

- Kristen Lindley

**Office of the Board of Regents**  
University of Houston System  
4800 Calhoun  
128 E. Cullen Bldg.  
Houston, Texas 77204-6001

(832) 842-3446  
Gerry Mathisen, Executive Administrator  
[glmathisen@central.uh.edu](mailto:glmathisen@central.uh.edu)

(832) 842-3444  
Marquette Hobbs, Executive Secretary  
[mdhobbs@central.uh.edu](mailto:mdhobbs@central.uh.edu)

GENERAL INFORMATION

**UHV PRESIDENT'S ADVISORY BOARD  
2009-2010**

**Terms of Appointment  
2009-2010 (Fiscal Year 2010)**

Name	County	Date First Appointed	Term Expires	Office Title
Cain, Susan Armstrong	Victoria	2005	2nd term 2011	
Clapp, Randy	Wharton	2003	3rd term 2012	
Fowler, Dale	Victoria	2004	2nd term 2010	
Herman, Jean	Victoria	2008	2011	
Hyde, Ron	Karnes	2007	2010	
Jacob, Jan	Victoria	2005	2nd term 2011	
Jaso, Hernan	Goliad	2003	3rd term 2012	Chair
Leatherwood, Janet	Ft. Bend	2007	2010	Vice Chair
Marshall, Arlene	Calhoun	2007	2010	
Parikh, Dakshesh "Kumar"	Victoria	2008	2011	
Rachid, Omar	Victoria	2008	2011	
Rollins, Willie	Matagorda	2004	2nd term 2010	
Rubio, Alfonso	Spain	2009	2012	
Thomas, Robin	Colorado	2004	2nd term 2010	
Villafranca, James	Victoria	2008	2011	
Weber, Richard	DeWitt	2009	2012	
Wu, Jack	Calhoun	2004	2nd term 2010	
<b>17 voting members</b>				
<b>Non-voting President's Regional Advisory Board Members</b>				
Alcorn, Dorothy J.	Victoria		Ex Officio	Board of Regents 1987-1993
Baynum, Thomas	Bee		Ex Officio	Pres. Coast Bend Com. College
Butler, Tom	Victoria		Ex Officio	Pres. Victoria College
Hudson, Tim	Victoria		N/A	President, UHV
McCrohan, Betty	Wharton		Ex Officio	Pres. Wharton County Jr. College
O'Connor, Morgan Dunn	Victoria		Ex Officio	Board of Regents 1999-2008
Walker, Kay Kerr	Victoria		Ex Officio	Board of Regents, 1993-1999

**UHV PRESIDENT'S CABINET  
2009-2010**

**Description:** The Cabinet assists the President in 1) formulating university plans and policies, 2) meeting the educational needs of the region, 3) establishing a campus atmosphere that builds strong working relationships with students, staff and faculty and addresses campus and statewide concerns, 4) developing and managing the university's fiscal resources, 5) participating in UH System, statewide, and local activities, and 6) developing and sustaining relationships with legislators.

**Members:**

Tim Hudson	Chair, President
Wayne Beran	Vice President for Administration and Finance
Suzanne LaBrecque	Provost and Vice President for Academic Affairs
Joe Dahlstrom	Director, Library
Jeffery Di Leo	Dean, School of Arts & Sciences
Lisa Barr	Chair, Staff Council
Joe Ferguson	Senior Director, Information Technology
Kathryn Tart	Dean, School of Nursing , School of Nursing
Chari Norgard	Assoc. Vice President, Student Success & Enrollment Management
Cynthia Schnebly	Chair, Faculty Council
Margaret Rice	Executive Assistant to the President
Laura Smith	Director, Human Resources/Affirmative Action
Lawrence Rossow	Dean, School of Education & Human Development
Erik Garino	President, Student Senate

## GENERAL INFORMATION

---

### FACULTY COUNCIL 2009-2010

**Description:** The Executive Committee consists of the president, vice-president, secretary, and immediate past president of the Faculty Council. In case an academic school has no member on the committee, one faculty member from that school shall be elected to the committee by the Faculty Council immediately following the election of the officers of the Faculty Council. The president of the Faculty Council serves as a representative to the University Faculties Executive Council, acts as president of the Executive Committee, and serves as president of the Faculty Senate. The Executive Committee prepares an agenda for meetings of the Council and Senate and conducts other Council and Senate business.

**Membership:**

- Cindy Schnebly, President, Associate Professor, School of Arts & Sciences
- Jane Fry, Vice President, Associate Professor, School of Education & Human Development
- Jonathan Du, Secretary, Associate Professor, School of Business Administration
- Dan Jaekle, Immediate Past President, Professor, School of Arts & Sciences
- Denise Neill, Representative, Assistant Professor, School of Nursing

### STAFF COUNCIL 2009-2010

**Description:** The Staff Council shall: 1) nominate staff members to serve on university-wide committees; 2) appoint standing and/or ad hoc committees as determined by a majority of the Executive Board; 3) prepare and submit position papers to the University President on staff concerns as determined by a majority of the Executive Board; 4) meet regularly to promote communications among its members; and 5) address issues affecting the activities and welfare of the membership.

**Membership:**

- Lisa Barr, Chair
- Miles Harrison, Vice Chair
- Emily Krenek, Secretary

**STUDENT SENATE  
2009-2010**

**Description:** The Student Senate is the governing body whose purpose is to promote communication among the constituents of UHV, to enhance the unique educational environment of UHV, and to address the specific needs of students.

Officers

President  
Jerico Erik Garino

Vice-President  
Nicole Garcia

Treasurer  
Ruston Raybon

Secretary  
Brandi Reyes

Senators at Large:

Victoria:  
Claire McGee  
Archie Garino

Sugarland:  
Vacant

Cinco Ranch:  
Vacant

Senators :

Undergraduate Arts & Sciences  
Elizabeth Martinez

Graduate Arts & Sciences  
Whitney Damborsky

Undergraduate Business  
Vacant

Graduate Business  
Vacant

Undergraduate Education  
Janice Johnson

Graduate Education  
Vacant

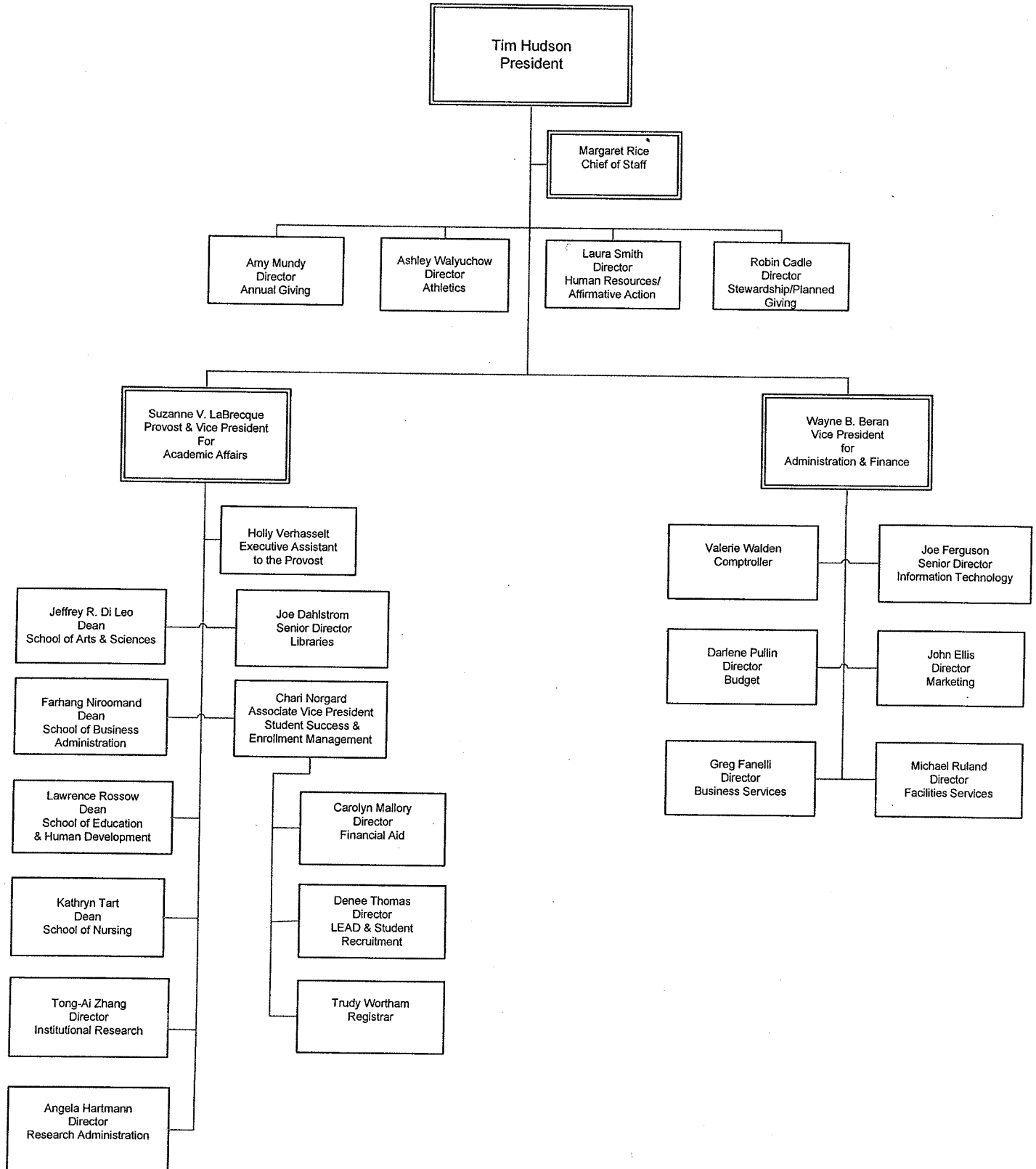
Undergraduate Nursing  
Vacant

Graduate Nursing  
Marianna Measom

Advisor:

Janet E. Foerster

UHV ORGANIZATIONAL CHART



**DEGREE PROGRAMS & DELIVERY SITE & MODE**  
2009-10

Program Name	CIP Code	Award Given		Instruction Mode			
				F2F	Off_camp F2F	Internet	100% internet
COMMUNICATION	09.0101.0000	B		x		x	
PUBLISHING	09.1001.0000		M				
COMPUTER SCIENCE- COMPUTER SCIENCE	11.0101.0002	B		x			
COMPUTER SCIENCE- INFORMATION SYSTEMS	11.0401.0000	B		x	x	x	
COMPUTER INFORMATION SYSTEMS	11.0401.0001		M	x	x	x	x
CURRICULUM AND INSTRUCTION	13.0301.0001		M	x	x	x	
ADMINISTRATION AND SUPERVISION	13.0401.0002		M	x	x	x	
SPECIAL EDUCATION	13.1001.0002		M	x	x	x	
COUNSELING	13.1101.0002		M	x	x	x	
HUMAN-ENGLISH	23.0101.0000	B		x		x	
BIOLOGY	26.0101.0000	B		x	x	x	
MATHEMATICAL SCIENCE- MATHEMATICS	27.0101.0000	B		x	x	x	
INTERDISCIPLINARY STUDIES	30.9999.0100		M	x	x	x	
INTERDISCIPLINARY STUDIES	30.9999.0113	B		x	x	x	
APPLIED ARTS AND SCIENCES	30.9999.4000	B		x	x	x	
PSYCHOLOGY	42.0101.0001	B		x	x	x	x
PSYCHOLOGY	42.0601.0000		M	x	x	x	

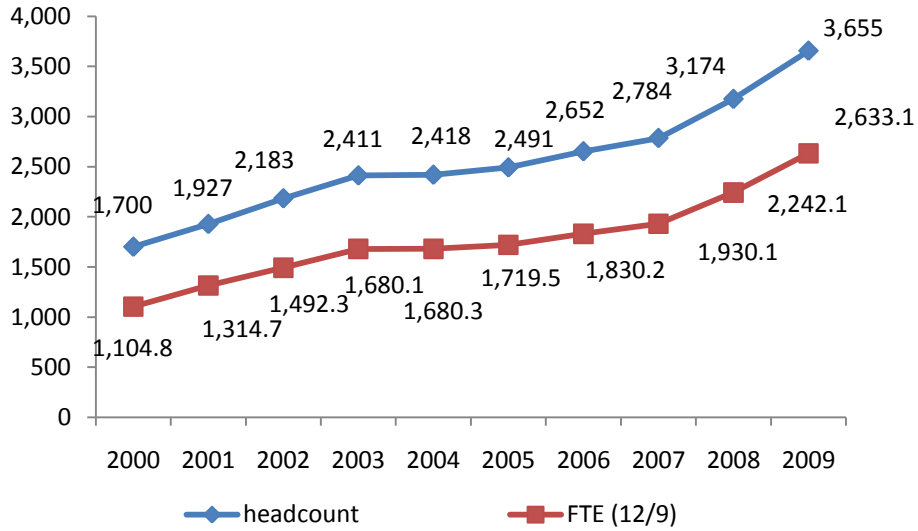
## GENERAL INFORMATION

Program Name	CIP Code	Award Given		F2F	Off_camp F2F	Internet	100% internet
CRIMINAL JUSTICE STUDIES	43.0104.0000	B		x		x	x
NURSING	51.1601.0001	B	M	x	x		
NURSING-NURSING ADMINISTRATION	51.1602.0000		M	x	x		
NURSING-CLINICAL NURSE SPECIALIST	51.1616.0000		M	x	x		
NURSING-NURSING EDUCATION	51.1699.6000		M	x	x		
BUSINESS ADMINISTRATION-GENERAL BUSINESS	52.0101.0001	B		x		x	x
BUSINESS ADMINISTRATION	52.0201.0000		M		x	x	x
BUSINESS ADMINISTRATION-MANAGEMENT	52.0201.0015	B		x			x
BUSINESS ADMINISTRATION-ACCOUNTING	52.0301.0000	B		x		x	
ECONOMIC DEVELOPMENT AND ENTREPRENEURSHIP	52.0701.0000		M			x	x
BUSINESS ADMINISTRATION-MARKETING	52.1401.0000	B				x	x
HUMAN-HISTORY	54.0101.0015	B		x	x	x	x

Generated 11/25/2009

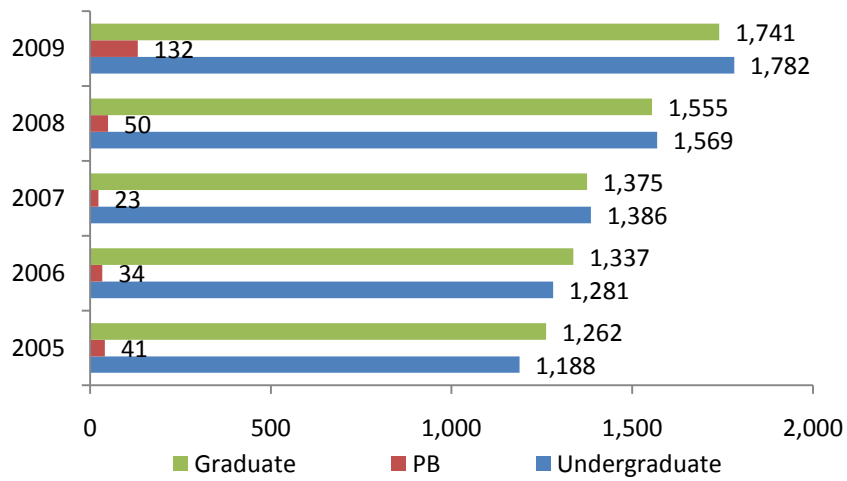
## **Student Information**

**ENROLLMENT**  
Fall 2000-2009



\* FTE is based on 12 SCH per undergraduate student and 9 SCH per graduate student.

**ENROLLMENT by LEVEL**  
Fall 2005-2009



ENROLLMENT

**ADMISSIONS DATA**  
Fall 2005-2009

	2005	%	2006	%	2007	%	2008	%	2009	%
<b>Undergraduate</b>										
Applications	517		633		778		709		820	
Accepted	431	83.4	459	72.5	556	71.5	671	94.6	624	76.1
Enrolled	316	73.3	351	76.5	417	75.0	325	48.4	395	63.3
<b>PB*</b>										
Applications	29		21		65		73			
Accepted	19	65.5	15	71.4	48	73.8	50	68.5		
Enrolled	11	57.9	7	46.7	28	58.3	32	64.0		
<b>Graduate</b>										
Applications	455		527		530		703		910	
Accepted	425	93.4	463	87.9	411	77.5	651	92.6	686	75.4
Enrolled	217	51.1	265	57.2	320	77.9	364	55.9	483	70.4
<b>Total</b>										
Applications	1001		1181		1373		1485		1730	
Approved	875	87.4	937	79.3	1015	73.9	1372	92.4	1310	75.7
Enrolled	544	62.2	623	66.5	765	75.4	721	52.6	878	67.0

% : % of the accepted to all applied, % of the enrolled to all accepted

\*: PB is included in graduate in F2009.

Source: Internal enrollment analysis before 2007. PS queries since F2007.

**ADMISSIONS BY LEVEL BY SCHOOL**  
Fall 2009

	level	applied	accepted	accept rate	enrolled	enroll rate
SoAS	UG	386	298	77.2	187	62.8
	GR	139	100	71.9	74	74.0
SoBA	UG	275	215	78.2	137	63.7
	GR	433	327	75.5	223	68.2
SoED	UG	139	108	77.7	68	63.0
	GR	286	238	83.2	172	72.3
SoN	UG	20	3	15.0	3	100.0
	GR	52	21	40.4	14	66.7
Total	UG	820	624	76.1	395	63.3
	GR	910	686	75.4	483	70.4
	total	1730	1310	75.7	878	67.0

Source: PS\_UHV\_AD\_applied, matriculated, CBI for enrolled

**DETAILED COMPOSITION OF STUDENT BODY**  
**Fall 2005-2009**

	2005	%	2006	%	2007	%	2008	%	2009	%
<b>Total Enrollment</b>	2,491		2,652		2,784		3,174		3,655	
<b>FTE (12/9)</b>	1719.5		1830.2		1930.1		2242.1		2633.1	
<b>Classification</b>										
Undergraduate	1,188	47.7	1,281	48.3	1,386	49.8	1,569	49.4	1,782	48.8
Post-baccalaureate	41	1.6	34	1.3	23	0.8	50	1.6	132	3.6
Graduate	1,262	50.7	1,337	50.4	1,375	49.4	1,555	49.0	1,741	47.6
<b>Total</b>	<b>2,491</b>	<b>100.0</b>	<b>2,652</b>	<b>100.0</b>	<b>2,784</b>	<b>100.0</b>	<b>3,174</b>	<b>100.0</b>	<b>3,655</b>	<b>100.0</b>
<b>Attendance Status</b>										
Full-time	709	28.5	711	26.8	751	27.0	901	28.4	1,077	29.5
Part-time	1,782	71.5	1,941	73.2	2,033	73.0	2,273	71.6	2,578	70.5
<b>Total</b>	<b>2,491</b>	<b>100.0</b>	<b>2,652</b>	<b>100.0</b>	<b>2,784</b>	<b>100.0</b>	<b>3,174</b>	<b>100.0</b>	<b>3,655</b>	<b>100.0</b>
<b>Enrollment By Division</b>										
SoAS	730	29.3	783	29.5	755	27.1	844	26.6	1,038	28.4
SoBA	790	31.7	886	33.4	1,011	36.3	1,295	40.8	1,526	41.8
SoEHD	971	39.0	931	35.1	946	34.0	907	28.6	974	26.6
SoN			52		72	2.6	128	4.0	117	3.2
<b>Total</b>	<b>2,491</b>	<b>100.0</b>	<b>2,652</b>	<b>100.0</b>	<b>2,784</b>	<b>100.0</b>	<b>3,174</b>	<b>100.0</b>	<b>3,655</b>	<b>100.0</b>
<b>Gender</b>										
Male	750	30.1	830	31.3	870	31.3	1,042	32.8	1,230	33.7
Female	1,741	69.9	1,822	68.7	1,914	68.8	2,132	67.2	2,425	66.3
<b>Total</b>	<b>2,491</b>	<b>100.0</b>	<b>2,652</b>	<b>100.0</b>	<b>2,784</b>	<b>100.0</b>	<b>3,174</b>	<b>100.0</b>	<b>3,655</b>	<b>100.0</b>
<b>Ethnicity</b>										
Black	312	12.5	376	14.2	393	14.1	505	15.9	607	16.6
Hispanic	412	16.5	471	17.8	493	17.7	551	17.4	642	17.6
Asian	208	8.4	211	8.0	219	7.9	308	9.7	387	10.6
American Indian	11	0.4	20	0.8	13	0.5	15	0.5	14	0.4
International	34	1.4	48	1.8	78	2.8	103	3.2	141	3.9
White	1,476	59.3	1,488	56.1	1,518	54.5	1,659	52.3	1,823	49.9
Unknown	38	1.5	38	1.4	70	2.5	33	1.0	41	1.1
<b>Total</b>	<b>2,491</b>	<b>100</b>	<b>2,652</b>	<b>100</b>	<b>2,784</b>	<b>100.0</b>	<b>3,174</b>	<b>100.0</b>	<b>3,655</b>	<b>100.0</b>

*Source: Internal enrollment analysis before 2007. CBI from F2007.*

## ENROLLMENT

---

### ANNUAL ENROLLMENT BY LEVEL 2005-2009

	2004-05	2005-06	2006-07	2007-08	2008-09
<b>Fall</b>					
Undergraduate	1150	1188	1280	1386	1,569
PB	58	41	35	23	50
Graduate	1210	1262	1337	1375	1,555
Total	2418	2491	2652	2784	3,174
<b>Spring</b>					
Undergraduate	1167	1164	1267	1432	1,620
PB	66	51	35	34	133
Graduate	1324	1298	1318	1430	1,507
Total	2557	2513	2620	2896	3,260
FE*			60	6	27
Summer1			Summer**		
Undergraduate	647	696	822	929	1,076
PB	54	37	31	22	111
Graduate	792	907	1025	1082	1,036
Total	1493	1640	1878	2033	2,223
FE*			31	92	62
Summer2					
Undergraduate	210	112			
PB	15	5			
Graduate	106	133			
Total	331	250			
Unduplicated					
Headcount	3,476	3,557	3,767	4,092	4,514

\*FE: enrollment of interim classes which is not included in the previous semester

\*\* Summer: summer enrollment is based on CB1 report from 2006-07, which combines Summer1 and Summer 2

*Source: Internal enrollment analysis before 2006-07, CB1 from 2006-07*

**ENROLLMENT BY MAJOR**  
**Fall 2005-2009**

	2005	2006	2007	2008	2009
<b>SoAS</b>					
<b>Applied Arts and Science</b>					
Undergraduate	140	144	138	139	162
Post-baccalaureate	3	1	0	1	2
Graduate	0	0	0	0	0
<b>Total</b>	<b>143</b>	<b>145</b>	<b>138</b>	<b>140</b>	<b>164</b>
<b>Biology</b>					
Undergraduate	61	69	65	82	95
Post-baccalaureate	2	4	3	3	7
Graduate	0	0	0	0	0
<b>Total</b>	<b>63</b>	<b>73</b>	<b>68</b>	<b>85</b>	<b>102</b>
<b>Communication</b>					
Undergraduate	47	45	34	43	59
Post-baccalaureate	3	2	1	2	3
Graduate	0	0	0	0	2
<b>Total</b>	<b>50</b>	<b>47</b>	<b>35</b>	<b>45</b>	<b>64</b>
<b>Criminal Justice</b>					
Undergraduate	41	41	63	70	82
Post-baccalaureate	0	0	0	0	0
Graduate	0	0	0	0	0
<b>Total</b>	<b>41</b>	<b>41</b>	<b>63</b>	<b>70</b>	<b>82</b>
<b>Computer/ Info Science</b>					
Undergraduate	68	79	72	64	86
Post-baccalaureate	1	2	0	4	4
Graduate	0	33	41	51	56
<b>Total</b>	<b>69</b>	<b>114</b>	<b>113</b>	<b>119</b>	<b>146</b>
<b>English</b>					
Undergraduate	38	35	24	31	47
Post-baccalaureate	0	0	0	1	2
Graduate	0	0	0	0	0
<b>Total</b>	<b>38</b>	<b>35</b>	<b>24</b>	<b>32</b>	<b>49</b>
<b>History</b>					
Undergraduate	41	49	48	55	62
Post-baccalaureate	0	0	0	0	1
Graduate	0	0	0	0	0
<b>Total</b>	<b>41</b>	<b>49</b>	<b>48</b>	<b>55</b>	<b>63</b>

## ENROLLMENT

---

	2005	2006	2007	2008	2009
<b>Interdisciplinary Studies</b>					
Undergraduate	0	0	0	0	0
Post-baccalaureate	0	0	0	0	0
Graduate	109	81	64	76	87
Total	109	81	64	76	87
<b>Computer Games &amp; Programming Skills</b>					
Undergraduate				3	5
Post-baccalaureate				0	0
Graduate				0	0
Total				3	5
<b>Mathematics</b>					
Undergraduate	31	26	21	25	32
Post-baccalaureate	0	0	0	1	0
Graduate	0	0	0	0	0
Total	31	26	21	26	32
<b>Psychology</b>					
Undergraduate	81	95	111	128	151
Post-baccalaureate	2	3	4	2	4
Graduate	62	74	64	63	89
Total	145	172	179	193	244
<b>SoBA</b>					
<b>Accounting</b>					
Undergraduate	63	60	81	120	150
Post-baccalaureate	9	8	2	5	14
Graduate	0	0	0	0	0
Total	72	68	83	125	164
<b>Business Administration</b>					
Undergraduate	0	0	0	113	163
Post-baccalaureate	0	0	0	1	11
Graduate	577	615	671	818	922
Total	577	615	671	932	1096
<b>Business, General</b>					
Undergraduate	114	145	172	133	149
Post-baccalaureate	1	2	2	2	1
Graduate	0	0	0	0	0
Total	115	147	174	135	150

ENROLLMENT

	2005	2006	2007	2008	2009
<b>Finance, General</b>					
Undergraduate					14
Post-baccalaureate					0
Graduate					0
Total					14
<b>Economic Development/Entrepreneurship</b>					
Undergraduate		0	0	0	0
Post-baccalaureate		0	0	0	0
Graduate		33	33	49	51
Total		33	33	49	51
<b>Healthcare Administration</b>					
Undergraduate		3	13	included in business	
Post-baccalaureate		0	0		
Graduate		0	0		
Total		3	13		
<b>Marketing</b>					
Undergraduate	25	19	31	54	49
Post-baccalaureate	1	1	1	0	2
Graduate	0	0	0	0	0
Total	26	20	32	54	51
<b>SoEHD</b>					
<b>Administration &amp; Supervision</b>					
Undergraduate	0	0	0	0	
Post-baccalaureate	0	0	0	0	15
Graduate	203	198	191	136	141
Total	203	198	191	136	156
<b>Curriculum &amp; Instruction</b>					
Undergraduate	0	0	0	2	0
Post-baccalaureate	0	0	0	0	50
Graduate	146	137	147	153	149
Total	146	137	147	155	199
<b>Guidance &amp; Counseling</b>					
Undergraduate	0	0	0	0	0
Post-baccalaureate	0	0	0	0	3
Graduate	148	146	126	135	142
Total	148	146	126	135	145

## ENROLLMENT

---

	2005	2006	2007	2008	2009
<b>Special Ed</b>					
Undergraduate	0	0	0	0	0
Post-baccalaureate	0	0	0	0	1
Graduate	17	20	25	35	45
Total	17	20	25	35	46
<b>IDS-Studies*</b>	441	421	444	440	421
<b>SED-PB**</b>	16	9	8	6	7
<b>SoN</b>					
<b>Undergraduate</b>		51	70	67	55
Post-baccalaureate		1	2	22	5
Graduate		0	0	39	57
Total		52	72	128	117
<b>Unknown</b>					
Undergraduate			6		
Post-baccalaureate			0		
Graduate			6		
Total			12		
<b>Grant total</b>	2,491	2,652	2,784	3,174	3,655

Source: Internal enrollment analysis before 2007. CBI from F2007

**ENROLLMENT BY RESIDENTIAL COUNTY**  
**Fall 2005-2009**

County	2005	%	2006	%	2007	%	2008	%	2009	%
Bee	17	0.7	26	1.0	27	1.0	32	1.0	30	0.8
Brazoria									80	2.2
Calhoun	72	2.9	64	2.4	61	2.2	65	2.0	63	1.7
Colorado	26	1.0	21	0.8	16	0.6	25	0.8	26	0.7
Dewitt	61	2.4	48	1.8	59	2.1	59	1.9	52	1.4
Fort Bend	588	23.6	652	24.6	735	26.4	978	30.8	1,110	30.4
Goliad	30	1.2	30	1.1	26	0.9	25	0.8	17	0.5
Gonzales	19	0.8	19	0.7	18	0.6	18	0.6	17	0.5
Harris	572	23.0	608	22.9	717	25.8	760	23.9	890	24.4
Jackson	57	2.3	58	2.2	55	2.0	48	1.5	57	1.6
Karnes	12	0.5	15	0.6	8	0.3	12	0.4	8	0.2
Lavaca	69	2.8	48	1.8	36	1.3	34	1.1	143	3.9
Matagorda	72	2.9	61	2.3	69	2.5	55	1.7	52	1.4
Refugio	11	0.4	12	0.5	9	0.3	10	0.3	10	0.3
Victoria	550	22.1	576	21.7	496	17.8	471	14.8	533	14.6
Wharton	130	5.2	131	4.9	126	4.5	120	3.8	118	3.2
Others	168	6.7	245	9.2	250	9.0	317	10.0	242	6.6
Out of state	37	1.5	38	1.4	76	2.7	145	4.6	60	1.6
Out of country									147	4.0
Total	2,491	100.0	2,652	100.0	2,784	100.0	3,174	100.0	3,655	100.0

**ENROLLMENT BY AGE**  
**Fall 2005-2009**

	2005	%	2006	%	2007	%	2008	%	2009	%
<21	61	2.4	65	2.5	61	2.2	52	1.6	56	1.5
21-25	598	24.0	623	23.5	652	23.4	783	24.7	885	24.2
26-30	548	22.0	601	22.7	605	21.7	767	24.2	883	24.2
31-40	743	29.8	806	30.4	915	32.9	973	30.7	1124	30.8
>40	541	21.7	557	21.0	551	19.8	599	18.9	707	19.3
Total	2,491	100	2,652	100	2,784	100	3,174	100	3,655	100
Average Age	32.9		32.9		32.7		32.5		32.3	

Source: internal enrollment before 2007, CBI from 2007

## ENROLLMENT

---

### ONE-YEAR RETENTION RATE BY ETHNICITY Fall 2005-2009

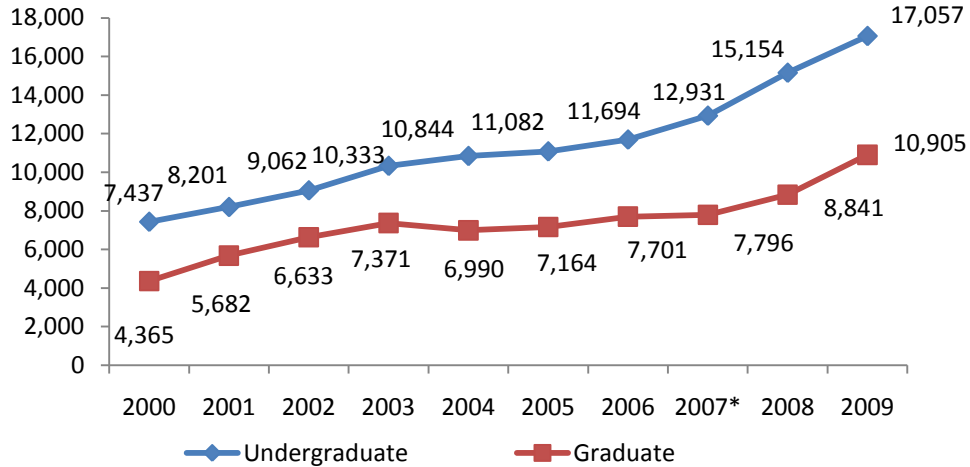
	2004 -05	Rate	2005 -06	Rate	2006 -07	Rate	2007 -08	Rate	2008 -09	Rate
Black										
start	4		7		14		20		12	
enroll	2	50.0	3	42.9	11	78.6	13	65.0	11	91.7
Hispanic										
start	12		28		30		32		19	
enroll	10	83.3	25	89.3	26	86.7	22	68.8	14	73.7
Asian										
start	2		1		1		5		3	
enroll	2	100.0	1	100.0	1	100.0	5	100.0	3	100.0
Native American										
start		NA		NA		NA		NA	1	
enroll									0	0.0
International										
start	1			NA	1		6		1	
enroll	1	100.0			1	100.0	4	66.7	1	100.0
White										
start	61		58		66		84		55	
enroll	47	77.0	43	74.1	50	75.8	65	77.4	44	80.0
Total										
start	80		94		113		147		93	
enroll	62	77.5	72	76.6	90	79.6	109	74.1	75	80.6

- One-year retention rate is based on the number of full-time (12 SCH) undergraduate students who enroll in a given fall semester and subsequently enroll in the following fall semester.

Source: LBB measure, CBI

**SEMESTER CREDIT HOURS**

Fall 2000-2009



**SEMESTER CREDIT HOURS BY SCHOOL BY LEVEL**

Fall 2005-2009

	2005	2006	2007	2008	2009
<b>SoAS</b>					
Undergraduate	6,705	7,036	6035	7038	8242
Graduate	927	1,077	956	1059	1551
Total	7,632	8,113	6,991	8,097	9,793
<b>SoBA</b>					
Undergraduate	1,785	1,920	2337	3009	4251
Graduate	3,546	3,975	4170	5085	6141
Total	5,331	5,895	6,507	8,094	10,392
<b>SoEHD</b>					
Undergraduate	2,592	2,313	3984	4212	4107
Graduate	2,691	2,649	2670	2478	2961
Total	5,283	4,962	6,654	6,690	7,068
<b>SoN</b>					
Undergraduate		425	575	895	457
Graduate				219	252
Total		425	575	1,114	709
<b>Grant total</b>					
Undergraduate	11,082	11,694	12,931	15,154	17,057
Graduate	7,164	7,701	7,796	8,841	10,905
Total	18,246	19,395	20,727	23,995	27,962

Source: Internal enrollment analysis before F2007, CB4+CB8 from F2007

**SEMESTER CREDIT HOURS BY INSTRUCTION AREA  
BY LEVEL BY SCHOOL  
Fall 2009**

	<b>UG</b>	<b>GR</b>	<b>Grand Total</b>
<b>SoAS</b>	<b>8,242</b>	<b>1,551</b>	<b>9,793</b>
BIO	438	21	459
CJS	723	18	741
COM	702	24	726
ENG	2,020	42	2,062
FLM		9	9
FOR		24	24
GAM	30		30
HIN		27	27
HIS	342	63	405
HUM	867		867
IDS		174	174
ISC	936	369	1,305
LES	144		144
MAS	375	18	393
NPL	168		168
PSY	1,416	669	2,085
PUB		60	60
REL		33	33
SPA	81		81
<b>SoBA</b>	<b>4,251</b>	<b>6,141</b>	<b>10,392</b>
ACC	663	984	1,647
BUS		525	525
ECO	174	633	807
EDE		291	291
FIN	210	630	840
HCA	48		48
MGT	1,854	2,109	3,963
MKT	795	591	1,386
NUR		9	9
QMS	507	369	876

CREDIT HOUR /COURSE

---

	UG	GR	Grand Total
<b>SoEHD</b>	4,107	2,961	7,068
AED		768	768
ANT	168		168
C&I	543	849	1,392
CED		819	819
EED		24	24
ESE	750		750
ESL	3		3
FED	183	372	555
HIS	252		252
IDS	243		243
MAS	282		282
MSE	201		201
NUR		9	9
RDG	657		657
SCI	411		411
SED	78		78
SPE	336	120	456
<b>SoN</b>	457	252	709
HCA	33		33
NUR	424	252	676
<b>Grand Total</b>	<b>17,057</b>	<b>10,905</b>	<b>27,962</b>

Source: CB4, CB8,

**STUDENT /FACULTY RATIO  
F2005-2009**

	<b>2005</b>	<b>2006</b>	<b>2007</b>	<b>2008</b>	<b>2009</b>
<b>FTE (12/9)</b>					
Undergraduate	923.5	974.5	1077.6	1262.8	1421.4
Graduate	796.0	855.7	866.2	982.3	1211.7
Total	1719.5	1830.2	1943.8	2245.2	2633.1
S/F ratio	20.3	21.2	20.4	20.8	22.1
<b>FT E (15/12)</b>					
Undergraduate	738.8	779.6	862.1	1010.3	1137.1
Graduate	597.0	641.8	649.7	736.8	908.8
Total	1335.8	1421.4	1511.7	1747.0	2045.9
S/F ratio	15.8	16.5	15.8	16.2	17.2
Faculty FTE	84.7	86.3	95.4	108.1	119.2

**CLASS & SCH LOAD PER STUDENT  
F2005-2009**

	<b>2005</b>	<b>2006</b>	<b>2007</b>	<b>2008</b>	<b>2009</b>
<b>Class Type</b>					
Organized*	311	295	352	401	435
Individual Instruction	76	75	79	107	99
Total	387	370	431	508	534
<b>Class Site</b>					
On-campus	139	119	94	72	81
Off-campus	100	104	132	149	154
ITV			34	81	84
Internet	137	164	171	206	215
Total			431	508	534
<b>Class Size (organized only)</b>	18.0	20.5	18.9	18.5	20.1
<b>Average SCH Load per Student</b>	7.32	7.31	7.45	7.56	7.65
<b>Average Class Load per Student</b>	2.42	2.41	2.51	2.48	2.52

\*Organized class includes lecture and seminar

*Source: Internal enrollment analysis before F2007, CB4 from F2007*

**ANNUAL SCH BY LEVEL  
2004-2008**

	<b>2004-05</b>	<b>2005-06</b>	<b>2006-07</b>	<b>2007-08</b>	<b>2008-09</b>
<b>Fall</b>					
Undergraduate	10,844	11,082	11,795	12,786	14,927
Graduate	6,990	7,164	7,590	7,778	8,820
<b>Total</b>	<b>17,834</b>	<b>18,246</b>	<b>19,385</b>	<b>20,564</b>	<b>23,747</b>
<b>Spring</b>					
Undergraduate	11,155	11,045	12,267	13,421	15,978
Graduate	7,575	7,290	7,383	8,077	8,893
<b>Total</b>	<b>18,730</b>	<b>18,335</b>	<b>19,650</b>	<b>21,498</b>	<b>24,871</b>
<b>Summer1</b>					
Undergraduate	4,261	4,724	5,968	6,672	7,743
Graduate	3,957	4,416	5,052	5,641	5,493
<b>Total</b>	<b>8,218</b>	<b>9,140</b>	<b>11,020</b>	<b>12,313</b>	<b>13,236</b>
<b>Summer2</b>					
Undergraduate	922	408			
Graduate	318	477			
<b>Total</b>	<b>1,240</b>	<b>885</b>			
<b>Total</b>					
Undergraduate	27,182	27,259	30,030	32,879	38,648
Graduate	18,840	19,347	20,025	21,496	23,206
<b>Total</b>	<b>46,022</b>	<b>46,606</b>	<b>50,055</b>	<b>54,375</b>	<b>61,854</b>

Source: Internal enrollment analysis before F2007, CB4 from F2007. Funded SCH only.

**ANNUAL SCH COMPLETION RATE  
2005-2009**

	<b>2004-05</b>	<b>2005-06</b>	<b>2006-07</b>	<b>2007-08</b>	<b>2008-09</b>
completion	91.4%	92.0%	91.8%	92.3%	92.7%

Source: CB4, CB6

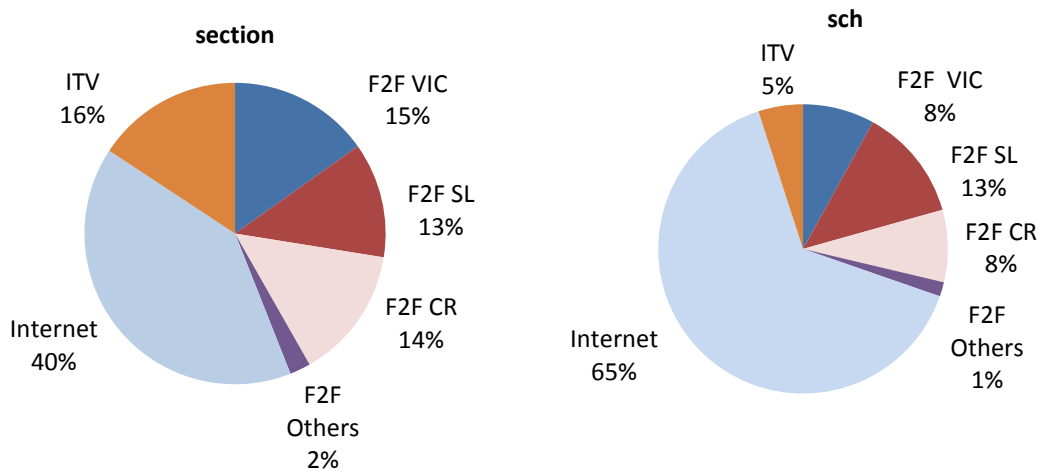
**SCH GENERATED BY INSTRUCTION MODE**

F2005-2009

	F2005	F2006	F2007	F2008	F2009
<b>Internet</b>					
section	137	164	171	206	215
SCH	9,356	11,884	12,749	15,187	18,093
<b>ITV</b>					
section	35	32	34	81	84
SCH	548	602	738	1,503	1,395
<b>Off-Campus Face to Face</b>					
section	100	99	132	149	154
SCH	4,147	3,865	4,653	5,549	6,229
<b>On Campus Face to Face</b>					
section		111	94	72	81
SCH		3,179	2,587	1,756	2,245
<b>Total</b>					
Total sections	272	406	431	508	534
Total SCH	14,051	19,530	20,727	23,995	27,962

**CLASS SECTIONS & SCH BY INSTRUCTION MODE**

Fall 2009



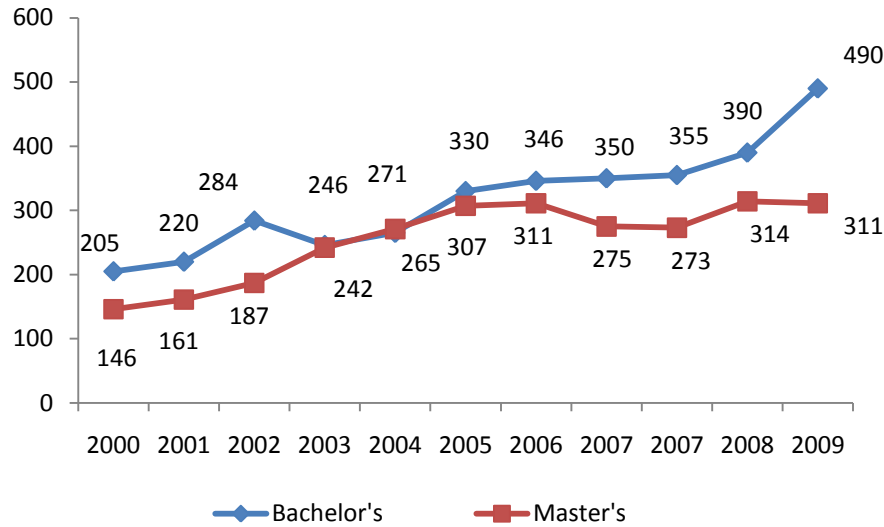
**Fall 2009:**

**78 % of the students enrolled in at least one of the internet class.**

**51% of the students enrolled in internet classes only.**

**18% of the students take face-to-face classes only.**

**ANNUAL DEGREES CONFERRED BY LEVEL  
2000-2009**



**DEGREES CONFERRED BY SCHOOL  
2005-2009**

	2005	2006	2007	2008	2009
<b>SoAS</b>					
Bachelor's	171	168	183	169	204
Master's	36	28	34	39	33
<b>Total</b>	<b>207</b>	<b>196</b>	<b>217</b>	<b>208</b>	<b>237</b>
<b>SoBA</b>					
Bachelor's	57	57	51	37	73
Master's	154	158	121	132	148
<b>Total</b>	<b>211</b>	<b>215</b>	<b>172</b>	<b>169</b>	<b>221</b>
<b>SoEHD</b>					
Bachelor's	102	121	110	126	141
Master's	117	125	118	143	130
<b>Total</b>	<b>219</b>	<b>246</b>	<b>228</b>	<b>269</b>	<b>271</b>
<b>SoN</b>					
Bachelor's			11	58	72
Master's					
<b>Total</b>			<b>11</b>	<b>58</b>	<b>72</b>
<b>Total</b>					
Bachelor's	330	346	355	390	490
Master's	307	311	273	314	311
<b>Total</b>	<b>637</b>	<b>657</b>	<b>628</b>	<b>704</b>	<b>801</b>

Source: internal degree statistics before 2007. CB9 from 2007

DEGREE INFORMATION

**DEGREES CONFERRED BY LEVEL BY ETHNICITY  
2005-2009**

	2005	%	2006	%	2007	%	2008	%	2009	%
<b>Undergraduate</b>										
White	230	69.7	248	71.7	225	63.4	253	64.9	290	59.2
Black	14	4.2	23	6.6	22	6.2	33	8.5	60	12.2
Hispanic	65	19.7	66	19.1	77	21.7	75	19.2	109	22.2
Asian	12	3.6	4	1.2	17	4.8	11	2.8	23	4.7
American Indian	2	0.6	0	0.0	3	0.8	3	0.8	2	0.4
International	7	2.1	5	1.4	3	0.8	4	1.0	1	0.2
Unknown					8	2.3	11	2.8	5	1.0
<b>Total</b>	<b>330</b>	<b>100.0</b>	<b>346</b>	<b>100.0</b>	<b>355</b>	<b>100.0</b>	<b>390</b>	<b>100.0</b>	<b>490</b>	<b>100</b>
<b>Graduate</b>										
White	140	45.6	172	55.3	147	53.8	168	53.5	162	52.1
Black	58	18.9	41	13.2	43	15.8	52	16.6	47	15.1
Hispanic	37	12.1	32	10.3	25	9.2	26	8.3	35	11.3
Asian	38	12.4	29	9.3	28	10.3	29	9.2	40	12.9
American Indian	1	0.3	0	0.0	1	0.4		0.0	1	0.3
International	33	10.7	37	11.9	15	5.5	31	9.9	20	6.4
Unknown					14	5.1	8	2.5	6	1.9
<b>Total</b>	<b>307</b>	<b>100.0</b>	<b>311</b>	<b>100.0</b>	<b>273</b>	<b>100.0</b>	<b>314</b>	<b>100.0</b>	<b>311</b>	<b>100</b>
<b>Total</b>										
White	370	58.1	420	63.9	372	59.2	421	59.8	452	56.4
Black	72	11.3	64	9.7	65	10.4	85	12.1	107	13.4
Hispanic	102	16.0	98	14.9	102	16.2	101	14.3	144	18.0
Asian	50	7.8	33	5.0	45	7.2	40	5.7	63	7.9
American Indian	3	0.5	0	0.0	4	0.6	3	0.4	3	0.4
International	40	6.3	42	6.4	18	2.9	35	5.0	21	2.6
Unknown					22	3.5	19	2.7	11	1.4
<b>Total</b>	<b>637</b>	<b>100.0</b>	<b>657</b>	<b>100.0</b>	<b>628</b>	<b>100.0</b>	<b>704</b>	<b>100.0</b>	<b>801</b>	<b>100.0</b>

**CERTIFICATION RATE OF TEACHER EDUCATION GRADUATES  
2005-2009**

	2004-05	2005-06	2006-07	2007-08	2008-09
Annual Initial Passing Rate	98%	99%	99%	99%	98%

Source: Texas SBEC

**DEGREES CONFERRED BY LEVEL BY MAJOR**  
**2005-2009**

	2005	2006	2007	2008	2009
<b>SoAS</b>					
Applied Arts and Science					
Undergraduate	39	38	33	56	50
Graduate	0	0	0	0	0
Total	39	38	33	56	50
Biology					
Undergraduate	14	17	29	10	33
Graduate	0	0	0	0	0
Total	14	17	29	10	33
Communication					
Undergraduate	24	15	17	13	8
Graduate	0	0	0	0	0
Total	24	15	17	13	8
Criminal Justice					
Undergraduate	13	17	15	15	20
Graduate	0	0	0	0	0
Total	13	17	15	15	20
Computer/info					
Undergraduate	28	23	23	16	21
Graduate	0	0	3	8	14
Total	28	23	26	24	35
Math					
Undergraduate	3	8	12	6	6
Graduate	0	0	0	0	0
Total	3	8	12	6	6
English					
Undergraduate	13	12	12	6	8
Graduate	0	0	0	0	0
Total	13	12	12	6	8
History					
Undergraduate	9	7	18	12	14
Graduate	0	0	0	0	0
Total	9	7	18	12	14
Interdisciplinary Studies					
Undergraduate	0	0	0	0	0
Graduate	30	20	27	16	14
Total	30	20	27	16	14

## DEGREE INFORMATION

---

	2005	2006	2007	2008	2009
<b>Psychology</b>					
Undergraduate	28	31	24	35	44
Graduate	6	8	4	15	5
Total	34	39	28	50	49
<b>SoBA</b>					
<b>Accounting</b>					
Undergraduate	18	28	35	15	18
Graduate	0	0	0	0	0
Total	18	28	35	15	18
<b>Business Admin/Management</b>					
Undergraduate	31	20	13	19	45
Graduate	154	158	121	132	139
Total	185	178	134	151	184
<b>Economic Dev. &amp; Entrep.</b>					
Undergraduate					0
Graduate					9
Total					9
<b>Marketing</b>					
Undergraduate	8	9	3	3	10
Graduate	0	0	0	0	0
Total	8	9	3	3	10
<b>SoEHD</b>					
<b>Administration &amp; Supervision</b>					
Undergraduate	0	0	0	0	0
Graduate	49	62	60	85	62
Total	49	62	60	85	62
<b>Curriculum &amp; Instruction</b>					
Undergraduate	102	121	110	126	141
Graduate	14	14	15	13	30
Total	116	135	125	139	171
<b>Guidance &amp; Counseling</b>					
Undergraduate	0	0	0	0	0
Graduate	54	49	39	43	31
Total	54	49	39	43	31
<b>Special Education</b>					
Undergraduate			0	0	0
Graduate			4	2	7
Total			4	2	7

---

DEGREE INFORMATION

---

	2005	2006	2007	2008	2009
<b>SoN</b>					
Undergraduate			11	58	72
Graduate			0	0	0
Total			11	58	72
<b>Undergraduate total</b>	<b>330</b>	<b>346</b>	<b>355</b>	<b>390</b>	<b>490</b>
<b>Graduate total</b>	<b>307</b>	<b>311</b>	<b>273</b>	<b>314</b>	<b>311</b>
<b>Grant total</b>	<b>637</b>	<b>657</b>	<b>628</b>	<b>704</b>	<b>801</b>

*Source: internal degree statistics before 2007. CB9 from 2007*

DEGREE INFORMATION

---

**FOUR-YEAR GRADUATION RATE BY ETHNICITY  
2005-2009**

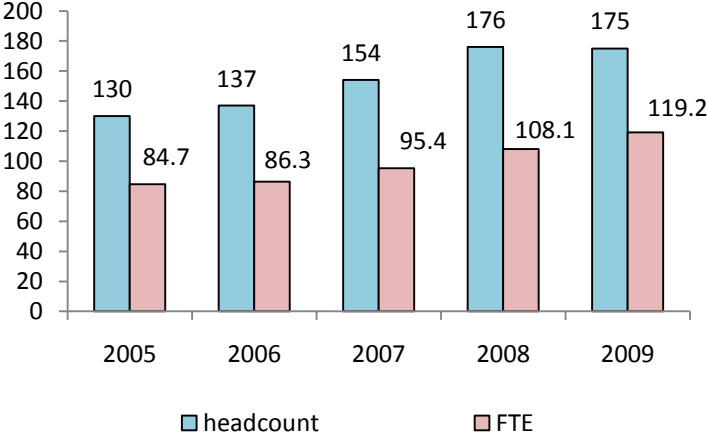
	2001-05	Rate	2002-06	Rate	2003-07	Rate	2004-08	Rate	2005-09	Rate
<b>Black</b>										
start	2		4		7		4		6	
graduate	0	0.0	2	50.0	3	42.9	1	25.0	2	33.3
<b>Hispanic</b>										
start	10		14		16		12		29	
graduate	6	60.0	5	35.7	12	75.0	9	75.0	20	69.0
<b>Asian</b>										
start	2		2		2		2		3	
graduate	2	100.0	2	100.0	2	100.0	2	100.0	1	33.3
<b>Native American</b>										
start			1		2					
graduate			1	100.0	2	100.0				
<b>Other</b>										
start							1			
graduate							1	100.0		
<b>White</b>										
start	46		44		59		60		58	
graduate	35	76.1	34	77.3	48	81.4	38	63.3	39	67.2
<b>Total</b>										
start	60		65		86		79		96	
graduate	43	71.7	44	67.7	67	77.9	51	64.6	62	64.6

\* Graduation rate is based on the number of full-time (12 sch) new transfers who graduate within four years.

Source: Internal report, LBB measure

## **Faculty & Staff**

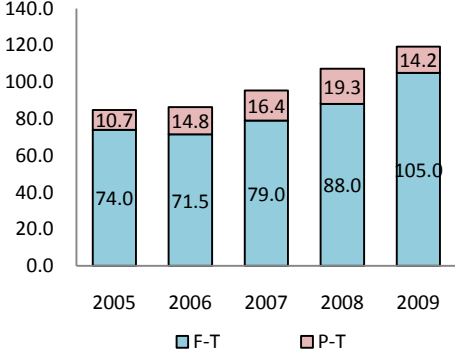
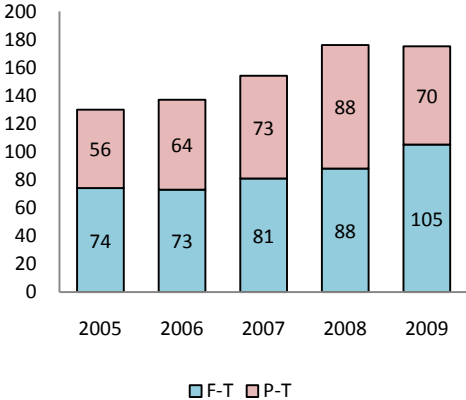
**UHV FACULTY  
2005-2009**



**FACULTY EMPLOYMENT STATUS  
Fall 2009**

**Faculty Headcount: 175**

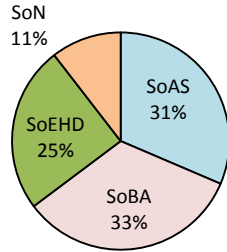
**Faculty FTE: 119.2**



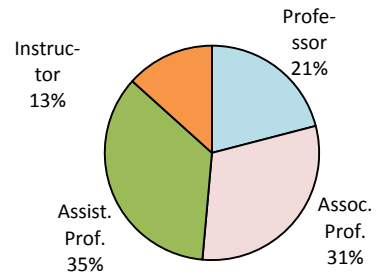
### FULL-TIME FACULTY PROFILE Fall 2009

Full-time faculty: 105

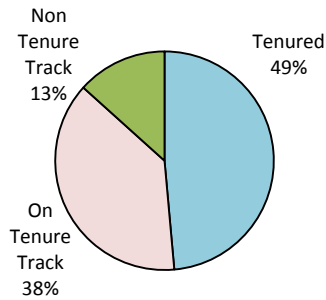
Full-time Faculty by School



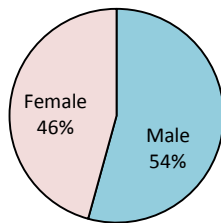
Full-time Faculty by Rank



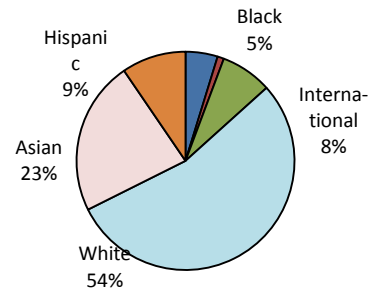
Full-time Faculty by Tenure Status



Full-time Faculty by Gender



Full-time Faculty by Ethnicity



**DETAILED COMPOSITION OF FULL-TIME FACULTY  
2005-2009**

	2005	%	2006	%	2007	%	2008	%	2009	%
<b>School</b>										
SoAS	22	29.7	22	30.1	23	28.4	29	33.0	33	31.4
SoBA	28	37.8	25	34.2	28	34.6	26	29.5	35	33.3
SoEHD	24	32.4	22	30.1	24	29.6	24	27.3	26	24.8
SoN			4	5.5	6	7.4	9	10.2	11	10.5
Total	74	100.0	73	100.0	81	100.0	88	100.0	105	100.0
<b>Ethnicity</b>										
Black	2	2.7	2	2.7	2	2.5	5	5.7	5	4.8
Hispanic	7	9.5	6	8.2	4	4.9	7	8.0	10	9.5
Asian	23	31.1	23	31.5	17	21.0	20	22.7	24	22.9
Indian American	0							0.0	1	1.0
International	0				7	8.6	7	8.0	8	7.6
White	42	56.8	42	57.5	51	63.0	49	55.7	57	54.3
Total	74	100.0	73	100.0	81	100.0	88	100.0	105	100.0
<b>Gender</b>										
Male	50	67.6	46	63.0	48	59.3	50	56.8	57	54.3
Female	24	32.4	27	37.0	33	40.7	38	43.2	48	45.7
Total	74	100.0	73	100.0	81	100.0	88	100.0	105	100.0
<b>Tenure Status</b>										
Tenured	35	47.3	38	52.1	46	56.8	47	53.4	51	48.6
On Tenure Track	34	45.9	33	45.2	28	34.6	35	39.8	40	38.1
Non Tenure Track	5	6.8	2	2.7	7	8.6	6	6.8	14	13.3
Total	74	100.0	73	100.0	81	100.0	88	100.0	105	100.0
<b>Rank</b>										
Professor	14	18.9	15	20.5	19	23.5	19	21.6	22	21.0
Assoc. Prof.	21	28.4	23	31.5	28	34.6	28	31.8	32	30.5
Assist. Prof.	39	52.7	34	46.6	33	40.7	35	39.8	37	35.2
Instructor	0		1	1.4	1	1.2	6	6.8	14	13.3
Total	74	100.0	73	100.0	81	100.0	88	100.0	105	100.0
<b>Location</b>										
Victoria			40	54.8	38	46.9	42	47.7	56	53.3
Sugar Land			28	38.4	37	45.7	41	46.6	42	40.0
Cinco Ranch			5	6.8	6	7.4	5	5.7	7	6.7
Total			73	100.0	81	100.0	88	100.0	105	100.0
<b>Education</b>										
Doctorate							84	95.5	98	93.3
Master's							4	4.5	7	6.7
Other							0		0	
Total							88	100.0	105	100.0

FACULTY/STAFF

---

**DETAILED COMPOSITION OF PART-TIME FACULTY  
2005-2009**

**PART-TIME FACULTY BY SCHOOL**

	2005		2006		2007		2008		2009	
	Head count	FTE	Head count	FTE	Head count	FTE	Head count	FTE	Head count	FTE
SoAS	20	4.7	26	6.6	33	7.2	37	8.1	26	5.5
SoBA	9	1.8	17	3.9	14	3.1	19	4.2	9	1.8
SoEHD	27	5.7	21	4.5	26	6.1	31	7.3	35	6.9
SoN							1	0.5	0	
Total	56	12.2	64	15.0	73	16.4	88	20.1	70	14.2

**HEADCOUNT BY GENDER**

	2005	%	2006	%	2007	%	2008	%	2009	%
Male	18	32.1	30.0	46.9	38	52.1	39	44.3	45	64.3
Female	38	67.9	34.0	53.1	35	47.9	49	55.7	25	35.7
Total	56	100.0	64	100.0	73	100.0	88	100.0	70	100.0

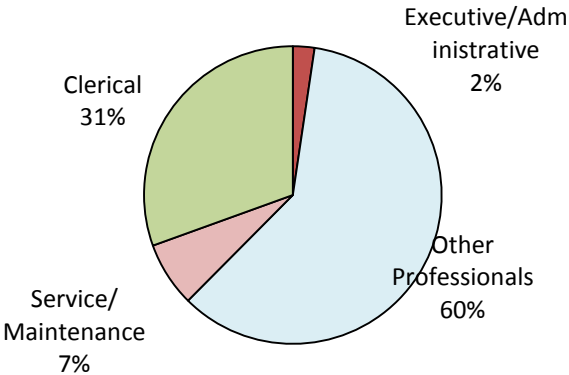
**HEADCOUNT BY ETHNIC GROUP**

	2005	%	2006	%	2007	%	2008	%	2009	%
Black	2	3.6	2	3.1	4	5.5	7	8.0	5	7.1
Hispanic	3	5.4	3	4.7	3	4.1	8	9.1	5	7.1
Asian	1	1.8	3	4.7	3	4.1	6	6.8	4	5.7
Native American										
International										
White	50	89.3	56	87.5	63	86.3	67	76.1	56	80.0
Total	56	100.0	64	100.0	73	100.0	88	100.0	70	100.0

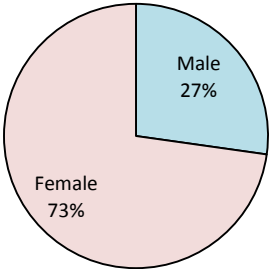
**STAFF PROFILE**  
Fall 2009

**Full-time staff: 213**

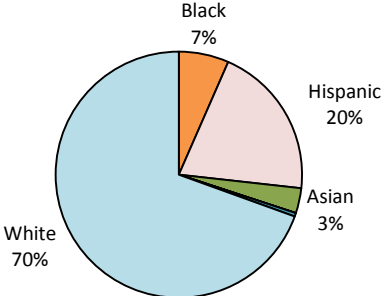
**Full-time Staff by Classification**



**Full-time Staff by Gender**



**Full-time Staff by Ethnicity**



FACULTY/STAFF

---

**FULL-TIME STAFF BY CLASSIFICATION**  
**2005-2009**

	<b>2005</b>	<b>2006</b>	<b>2007</b>	<b>2008</b>	<b>2009</b>
Executive/Administrative	5	5	5	4	5
Other Professionals	96	102	117	119	128
Clerical	68	65	68	65	65
Service/Maintenance	18	16	18	15	15
<b>Total</b>	<b>187</b>	<b>188</b>	<b>208</b>	<b>203</b>	<b>213</b>

**FULL-TIME STAFF BY GENDER**  
**2005-2009**

	<b>2005</b>	<b>%</b>	<b>2006</b>	<b>%</b>	<b>2007</b>	<b>%</b>	<b>2008</b>	<b>%</b>	<b>2009</b>	<b>%</b>
Male	51	27.3	47	25.0	61	29.3	52	25.6	58	27.2
Female	136	72.7	141	75.0	147	70.7	151	74.4	155	72.8
<b>Total</b>	<b>187</b>	<b>100.0</b>	<b>188</b>	<b>100.0</b>	<b>208</b>	<b>100.0</b>	<b>203</b>	<b>100.0</b>	<b>213</b>	<b>100.0</b>

**FULL-TIME STAFF BY ETHNICITY**  
**2005-2009**

	<b>2005</b>	<b>%</b>	<b>2006</b>	<b>%</b>	<b>2007</b>	<b>%</b>	<b>2008</b>	<b>%</b>	<b>2009</b>	<b>%</b>
Black	12	6.4	15	8.0	17	8.2	13	6.4	14	6.6
Hispanic	34	18.2	28	14.9	35	16.8	38	18.7	43	20.2
Asian	5	2.7	7	3.7	10	4.8	8	3.9	7	3.3
Native American		0.0		0.0				0.0		0.0
International		0.0		0.0	1	0.5		0.0	1	0.5
White	136	72.7	138	73.4	145	69.7	144	70.9	148	69.5
<b>Total</b>	<b>187</b>	<b>100.0</b>	<b>188</b>	<b>100.0</b>	<b>208</b>	<b>100.0</b>	<b>203</b>	<b>100.0</b>	<b>213</b>	<b>100.0</b>

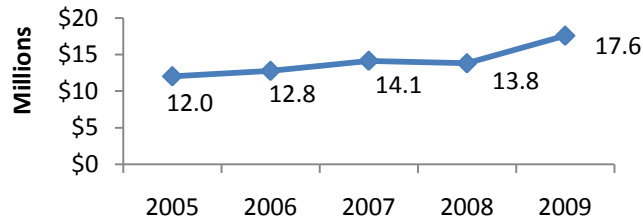
## **Financial Information**

**TUITION & FEES \***  
2005-2009

	2005	2006	2007	2008	2009
<b>Undergraduate</b>					
Resident	\$1,770	\$1,902	\$2,016	\$2,118	\$2,190
Non-resident	\$5,082	\$5,202	\$5,352	\$5,490	\$5,514
<b>Graduate</b>					
Resident	\$1,818	\$1,962	\$2,097	\$2,238	\$2,337
Non-resident	\$3,852	\$3,987	\$4,149	\$4,317	\$4,380

\* Based on 12 semester credit hours for undergraduate students and 9 semester credit hours for graduate students.

**TOTAL AMOUNT OF FINANCIAL AID**  
2005-2008



**AMOUNT OF FINANCIAL ASSISTANCE BY CATEGORY**  
2005-2008

	2005	2006	2007	2008	2009
Scholarships	\$775,471	\$683,611	\$788,749	\$737,823	\$867,707
Grants	\$1,946,760	\$1,928,430	\$1,997,353	\$2,066,907	\$2,686,306
Loans	\$8,028,541	\$8,678,351	\$9,441,823	\$9,099,974	\$11,220,528
Work Study	\$77,034	\$62,252	\$69,189	\$58,567	\$38,137
Short-term Loans	\$1,188,528	\$1,406,697	\$1,847,871	\$1,836,867	\$2,772,221
Child Care	\$3,500				
<b>Total</b>	<b>\$12,019,834</b>	<b>\$12,759,341</b>	<b>\$14,144,985</b>	<b>\$13,800,138</b>	<b>\$17,584,899</b>

Source: Financial Aid