

# LockDown Browser Student Tutorial

## Introduction

Respondus LockDown Browser™ is a customized browser that increases the security of online testing in Blackboard. When you use Respondus LockDown Browser to access an assessment, you are unable to print, copy, go to another URL, or access other applications. You are locked into an assessment until it is submitted for grading.

## Overview of Browser Application

Respondus LockDown Browser is a client application that is installed to a local computer. It provides a custom interface for the Internet Explorer software that is already installed on a Windows computer. It does **not** modify an existing copy of Internet Explorer, but rather, installs a separate program that will display the custom interface when it is started.

Respondus LockDown Browser uses the same security features and service packs that are currently installed for Internet Explorer. Installing Respondus LockDown Browser won't modify the current version of Internet Explorer in any way.

## Overview of Browser Application

Respondus LockDown Browser creates a "locked" testing environment for Blackboard and includes the following features:

- Assessments are displayed full-screen and cannot be minimized
- Assessments cannot be exited until submitted by users for grading
- Task switching or access to other applications is prevented
- Printing functions are disabled
- Print Screen and capturing functions are disabled
- Copying and pasting anything to and from an assessment is prohibited
- Right-click menu options are disabled
- Browser menu and toolbar options are disabled except Back, Forward, Refresh and Stop
- Function keys (F1-F12) are disabled
- Source code for the HTML page cannot be viewed
- URLs cannot be typed by the user
- Over 250 screen capture, messaging, screen-sharing and network monitoring applications are blocked from running
- The browser automatically starts at the institution's login page for Blackboard
- Links in questions that point to other servers don't compromise the "locked" testing environment
- Pages from the assessment aren't cached or stored in Internet Explorer's history listing
- And many other features...

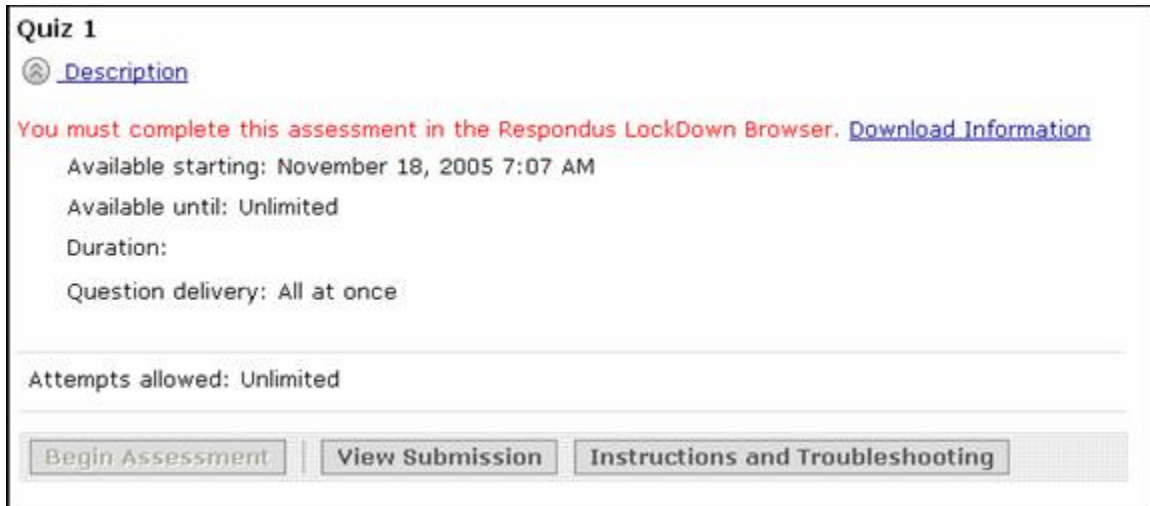
Respondus LockDown Browser is **not** intended to replace the browser used by students within Blackboard. Respondus LockDown Browser is only intended for use by you while taking assessments that have been prepared for use with Respondus LockDown Browser.

### Technical Requirements for Browser Installation

- Windows XP, Windows 2000, Windows ME, Windows 98
- Internet Explorer (it must pass the browser check for Blackboard)
- 1 MB of permanent space on the hard drive

## You Will See A Warning Message...

You will then be required to use Respondus LockDown Browser to access the assessment. If a student attempts to take the assessment using a browser other than Respondus LockDown Browser, a warning message will be displayed and the "Begin Assessment" button will be greyed out, preventing you from continuing, as shown below.



## Downloading & Installing Respondus LockDown Browser

- 1) Start your Computer
- 2) Start Internet Explorer
  - You must use Internet Explorer (5.5 or higher) to download and install Respondus LockDown Browser, even if you normally use a different browser to access the Internet.
  - To determine the version of Internet Explorer, select Help > About Internet Explorer.
- 3) Go to the download link that is supplied to you, which will look something like:  
<http://www.respondus.com/lockdown/information.pl?ID=185514015>

The following screen will appear:

Click on the logo of the operating system where Respondus LockDown Browser will be installed (or, [click here](#) for more information on this product).

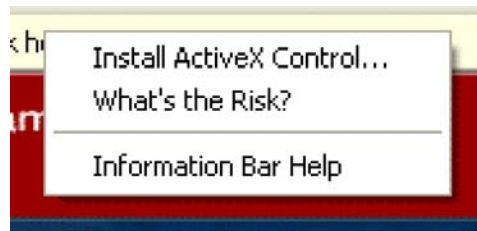


**Select One**

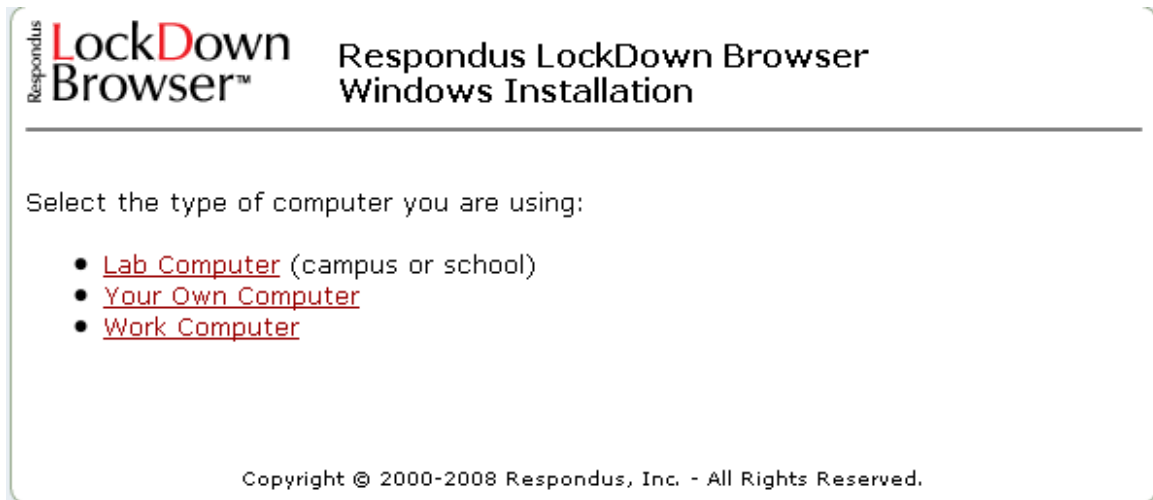
Copyright © 2000-2008 Respondus, Inc. - All Rights Reserved.

4. Read the instructions shown and select the Windows or Mac version, depending on which type of computer you are using.

5. Depending on your version of Internet Explorer, the following ActiveX warning may appear in the thin bar that appears below the address field of the browser. If this occurs, **right-click** on the warning message and select **Install ActiveX Control...** from the menu.



6. When the installation screen for Respondus LockDown Browser appears, click the selection most appropriate for your situation. For most people, "your own computer" is the best choice.



7. When the Respondus Installation screen appears, click on "Download Installer".

It's only necessary to install Respondus LockDown Browser once. To check whether it's already been installed on your computer, look for the following icon on your Windows desktop:



Or, look for the application using the Windows Start Menu:

**Start -> All Programs -> Respondus -> LockDown Browser**

If not already installed, download the browser installation program using the following link:

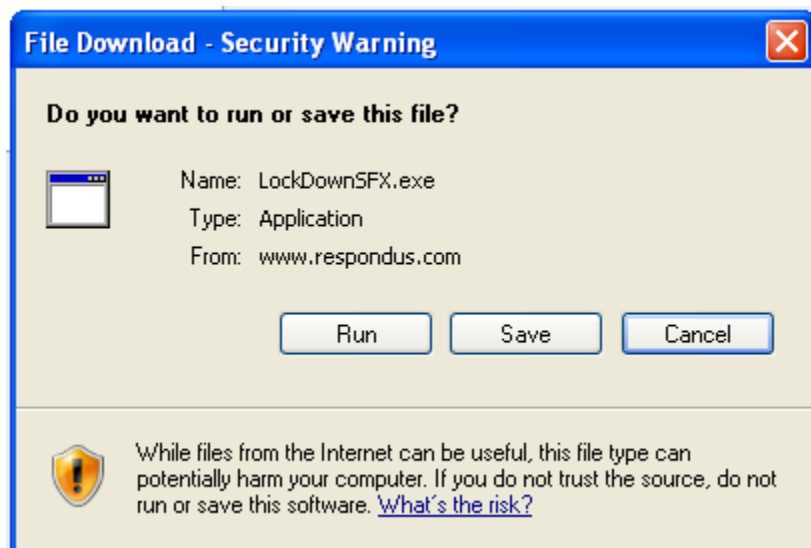
[Download Installer](#)

The file downloaded will have the name **LockDownSetup.exe**. Locate and double-click the file to start the setup process. Follow the onscreen instructions.

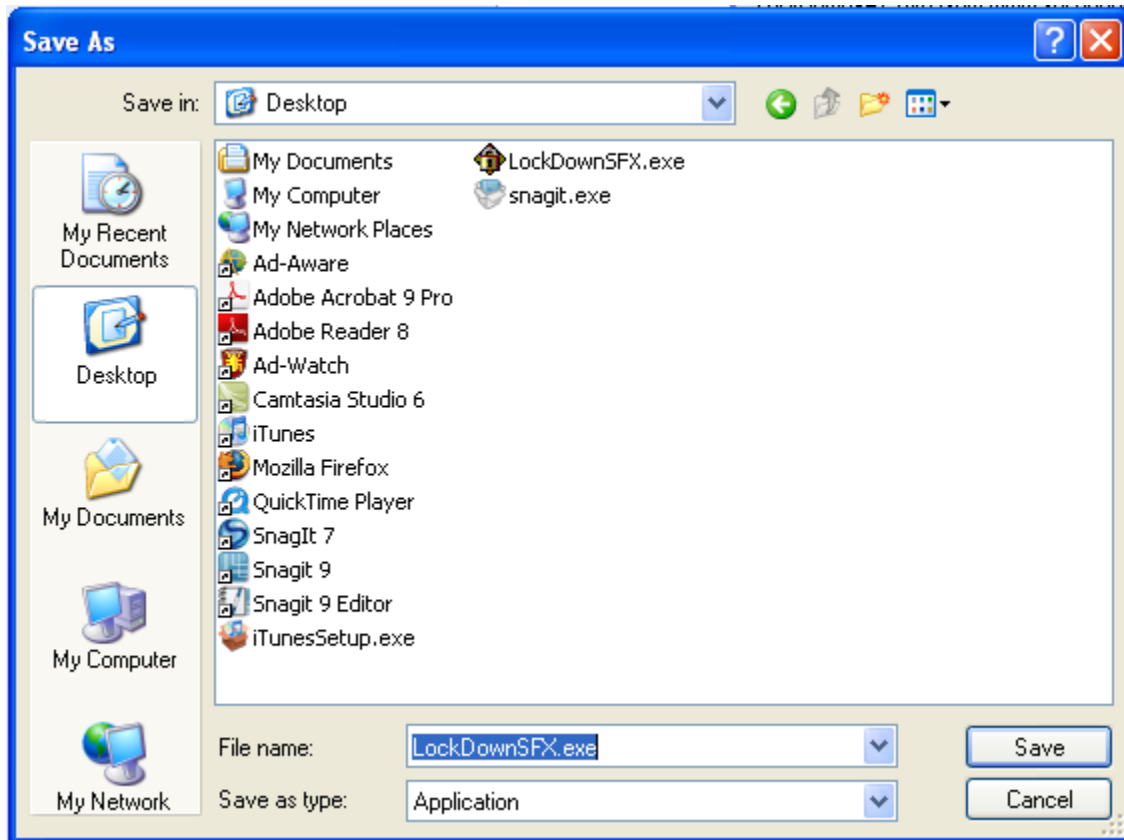
Once installed, locate the LockDown Browser icon on your desktop and double-click it to launch the software.

Copyright © 2000-2008 Respondus, Inc. - All Rights Reserved.

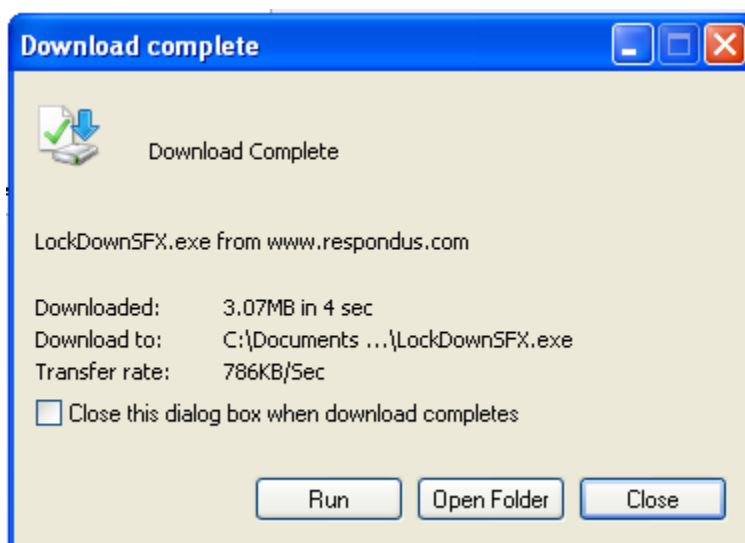
8. Click "Save File" to save the file to your desktop.



9. Be sure to click the "Desktop" icon to save the Installation file to your desktop:



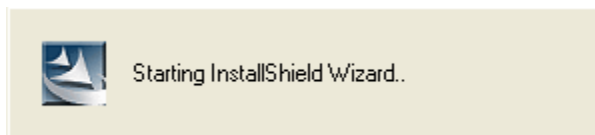
10. Once the download is complete, select "Run" to begin the installation process:



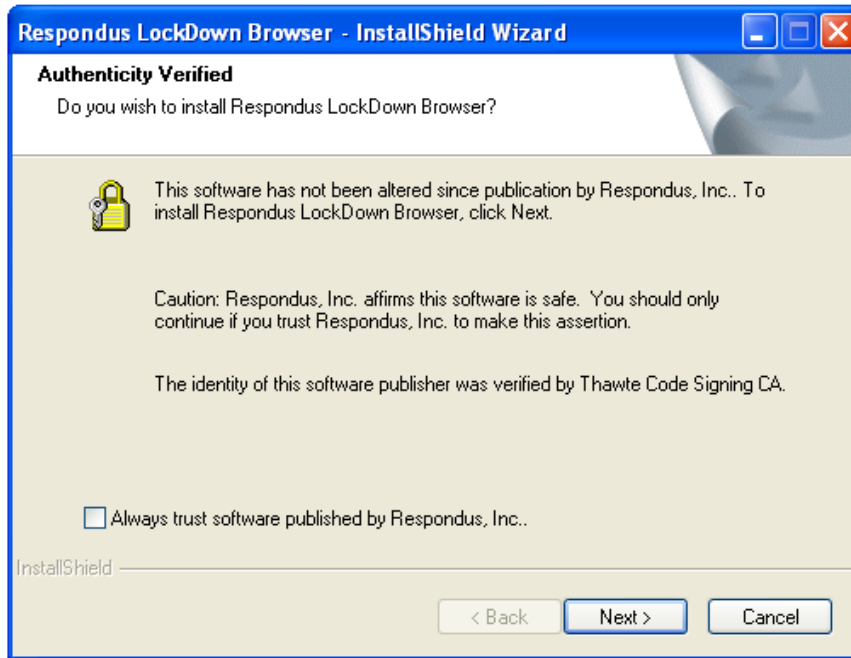
11. Answer "Yes" if prompted to accept the programs from Macrovision (InstallShield) and Respondus (LockDown Browser).



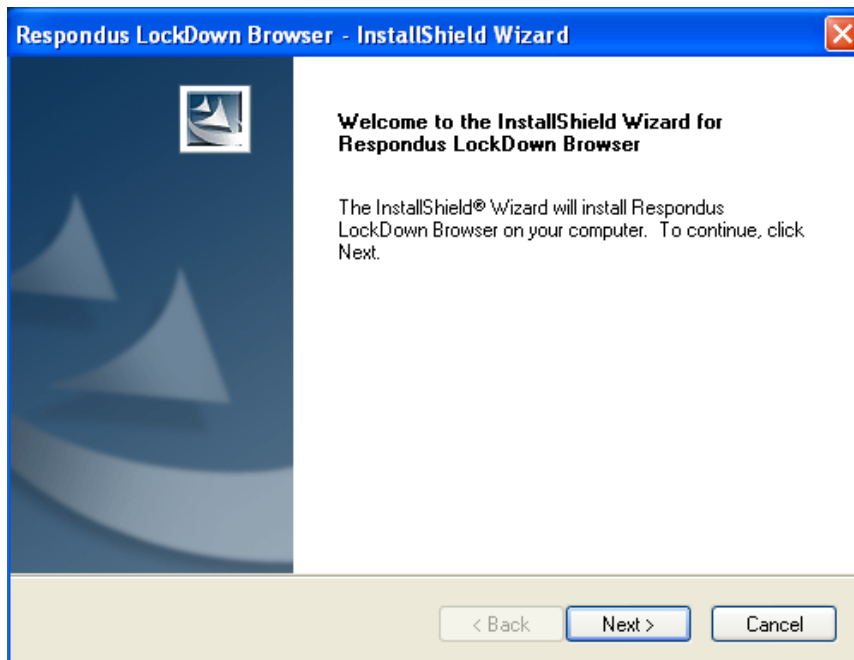
12. The InstallShield Wizard will start. It may take a minute or so for the InstallShield Wizard to load, so be patient.



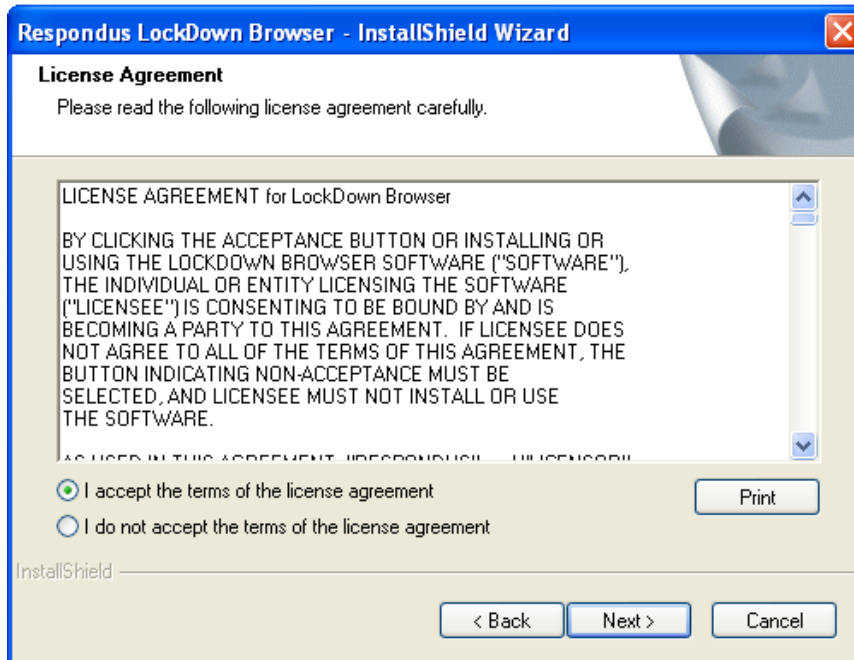
13. When the following screen appears, click **Next**.



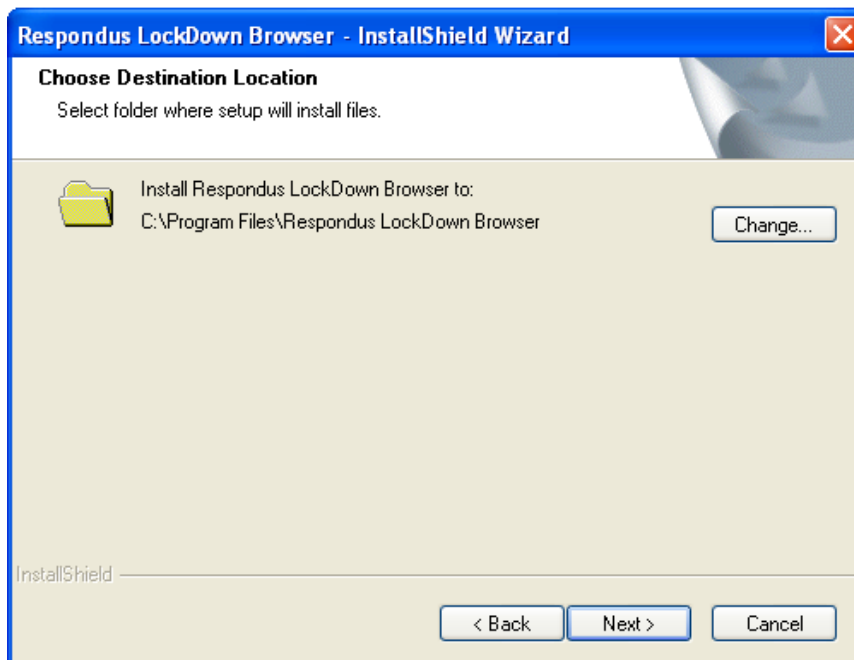
14. When the welcome screen appears, click **Next** again.



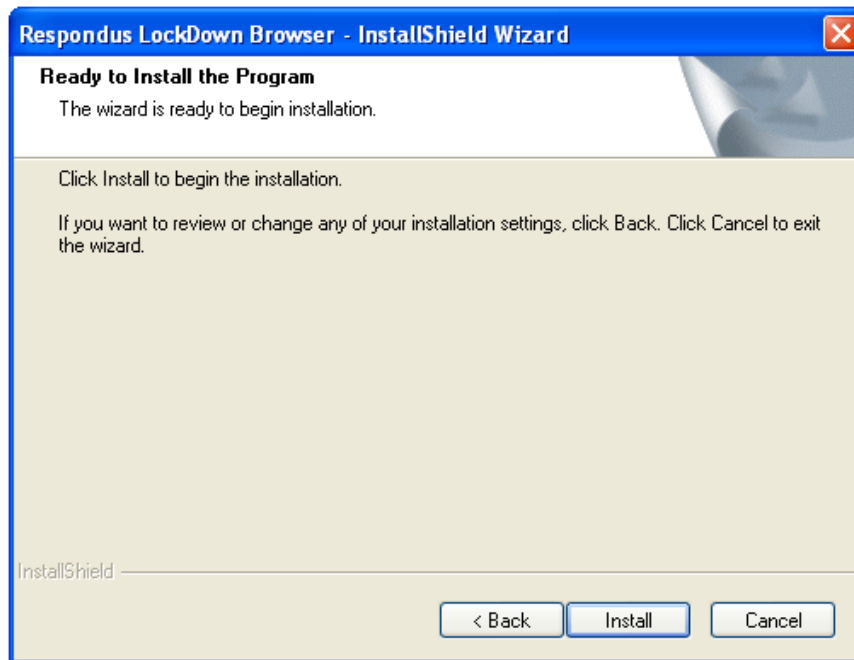
15. Review the license agreement and select the "I accept..." option. Click **Next**.



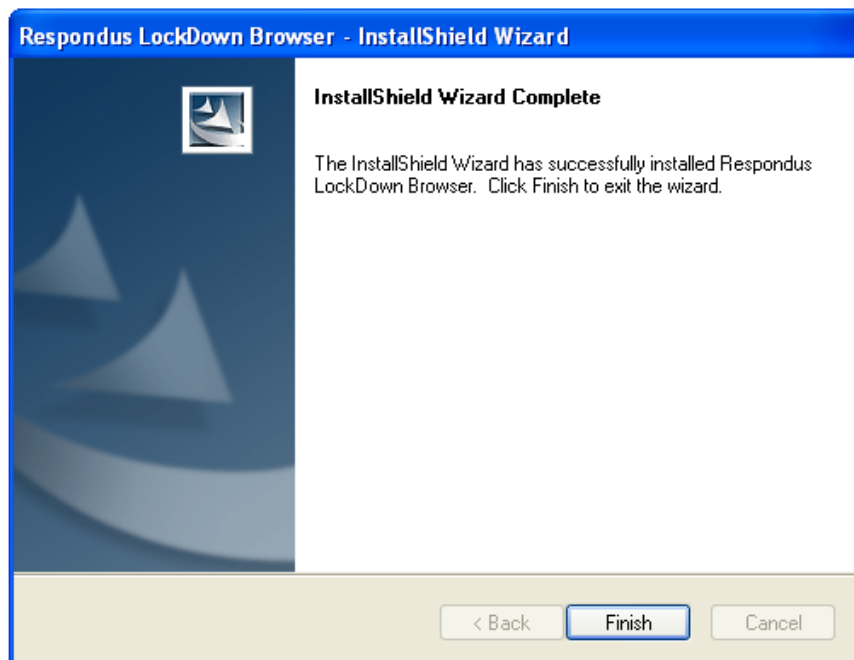
16. Accept the default location for Respondus Lockdown Browser and click **Next**.



17. Finally, click Install to begin the installation process.



18. The following screen will appear when the installation is complete. Click **Finish** and also close the browser window.



19. A shortcut should now appear on your desktop. Double-click it to start Respondus LockDown Browser.



Be sure that Respondus LockDown Browser is working properly well in advance of the first time you will need to use it.

20. Now that you've got LockDown Browser installed, it's time to STUDY!!